



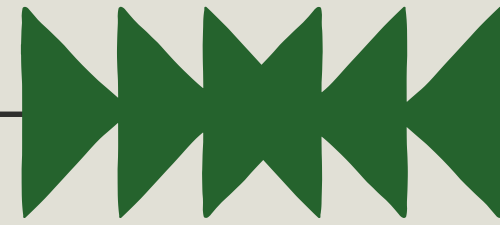
A Program of OJJDP

[WWW.TRIBALYOUTH.ORG](http://WWW.TRIBALYOUTH.ORG)



# Tribal Youth Programs Data Collection

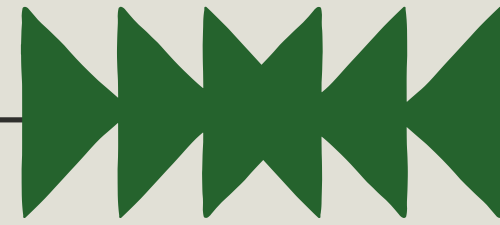
[www.TRIBALYOUTH.org](http://www.TRIBALYOUTH.org)



# Before We Get Started

*This project was supported by Grant 15PJDP-24-GK-02602 MUMU awarded by the Office of Juvenile Justice and Delinquency Prevention, Office of Justice Programs, U.S. Department of Justice. The opinions, findings, and conclusions or recommendations expressed in this publication/program/exhibition are those of the author(s) and do not necessarily reflect those of the Department of Justice.*





**Ask questions  
and ask them  
often!**

[WWW.TRIBALYOUTH.ORG](http://WWW.TRIBALYOUTH.ORG)





# Indigenous Data Sovereignty

**The right of a nation to govern the collection ownership and application of its own data.**

You get to determine what you collect, how you collect it, and what it is to be used for.



# NCAI: The State of Tribal Data Capacity in Indian Country

## Identified uses of Tribal data on members:

- Complete grant or other required reporting (76%)
- Communicating with Tribal members (69%)
- Service delivery (61%)
- Setting Tribal priorities and strategic goals (60%)



# What do we know?

Received a  
CTAS PA9  
Planning Grant

Formed a Tribal  
Youth Program  
Planning Team

Develop a TY  
Seeding Change  
Strategic Plan

Collected data-  
informs  
decision-making



# What is Data?

Factual  
Information

- Something that can be observed/measured
- Does not require additional analysis

Can be  
quantitative

- # of students with improved grades/academic success
- # of youth participating in Talking Circles

...or qualitative

- Types of support services offered to youth
- Types of healing-informed resources offered

Can be analyzed to  
draw conclusions

- Are we serving our intended population?
- Are youth receiving referral services?
- Have we identified service area gaps or additional service needed?



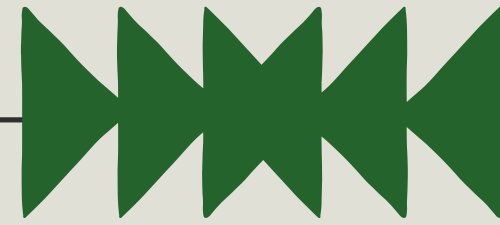
Data helps you identify the needs of your youth.

Data collection and analysis should be continuous.

**MAJOR DATA THEMES**

You don't need to be an expert—get your team involved

Data helps generate support from tribal leaders, as well as community and grant funders.



# Data as Storytelling

## Before Story = Baseline Data

*What does your community look like right now?*

- *Academic success rates*
- *# of youth-serving programs*
- *Youth substance use rates*
- *Diversity of services that align with youth needs*
- *Types of juvenile justice issues impacting youth, their families, and the community*
- *High School graduation rates*

## After Story = Comparison Data

*How will a Tribal Youth Program contribute to the community?*



*Include new data collected during the TY planning process.*





# Purpose of Data Collection

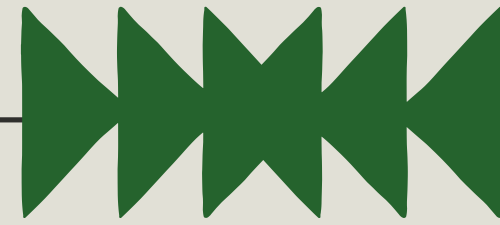
To better identify the strengths and challenges of the community

To Identify the strengths and challenges of current youth programs

To measure the effectiveness of resources and services offered to youth

To gather data needed to make data-informed decisions

To create baseline data and measure if a Harvesting Change Tribal Youth Program is funded in the future



# Stages of Data Collection

## 1. Strategic Planning

- Pre-program implementation
- Local-level data
- Assists to develop planning goals
- Illustrates what issues to prioritize

## 2. Program Monitoring & Evaluation

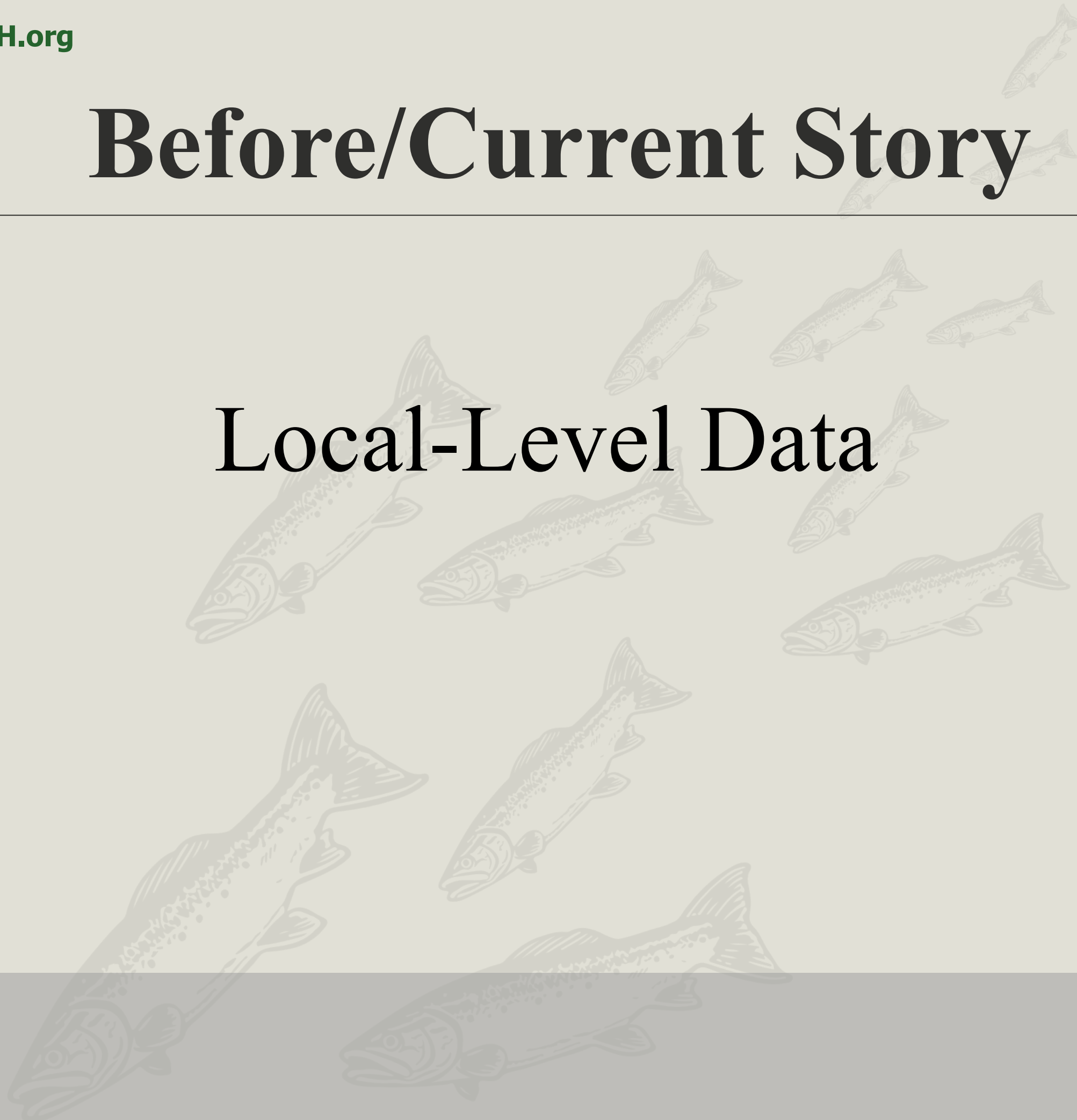
- Real-time, consistent data collection
- Data points relevant to OJJDP Semi-Annual Reports
- Share data with OJJDP/funders/Tribal Council

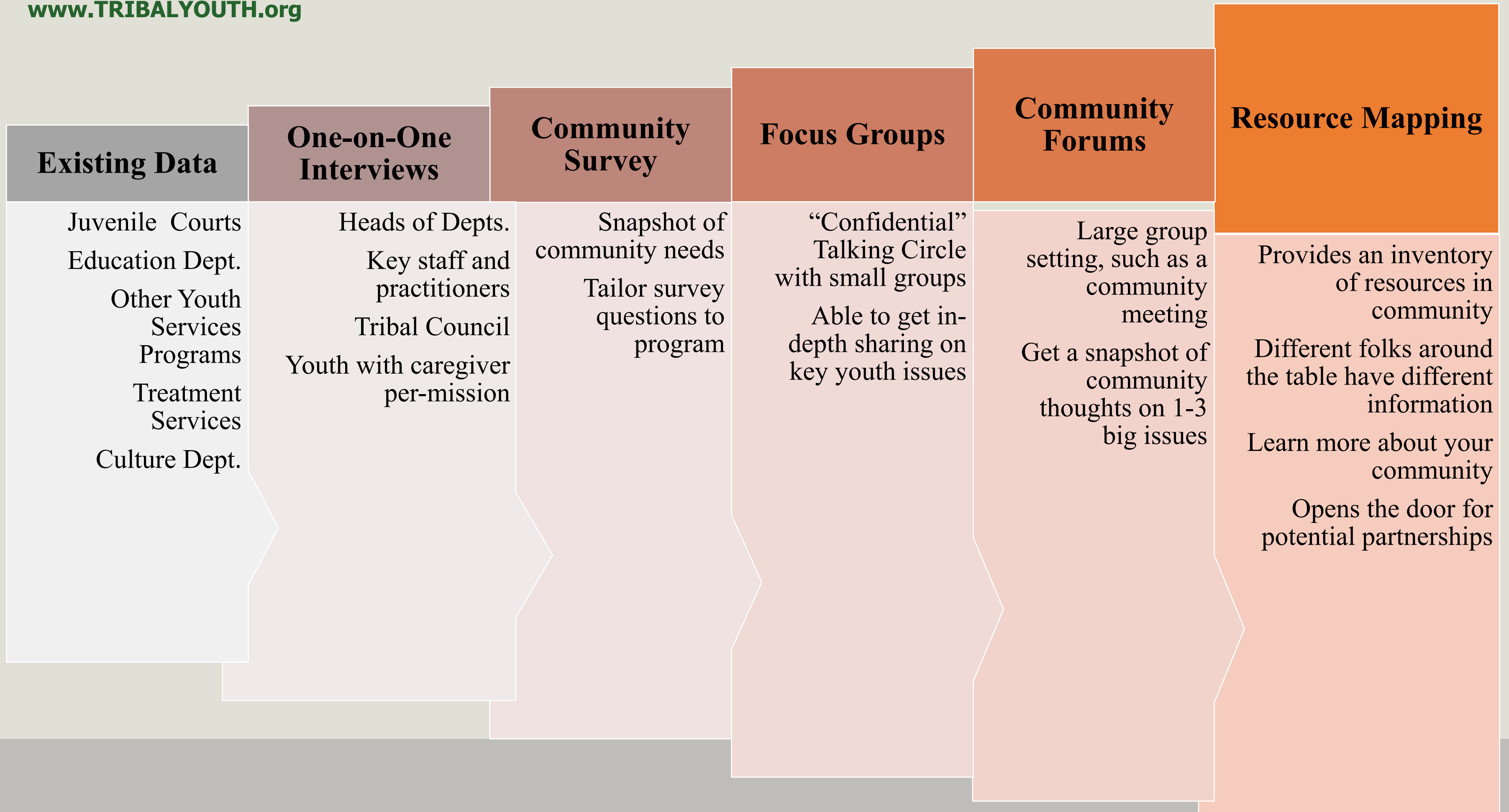


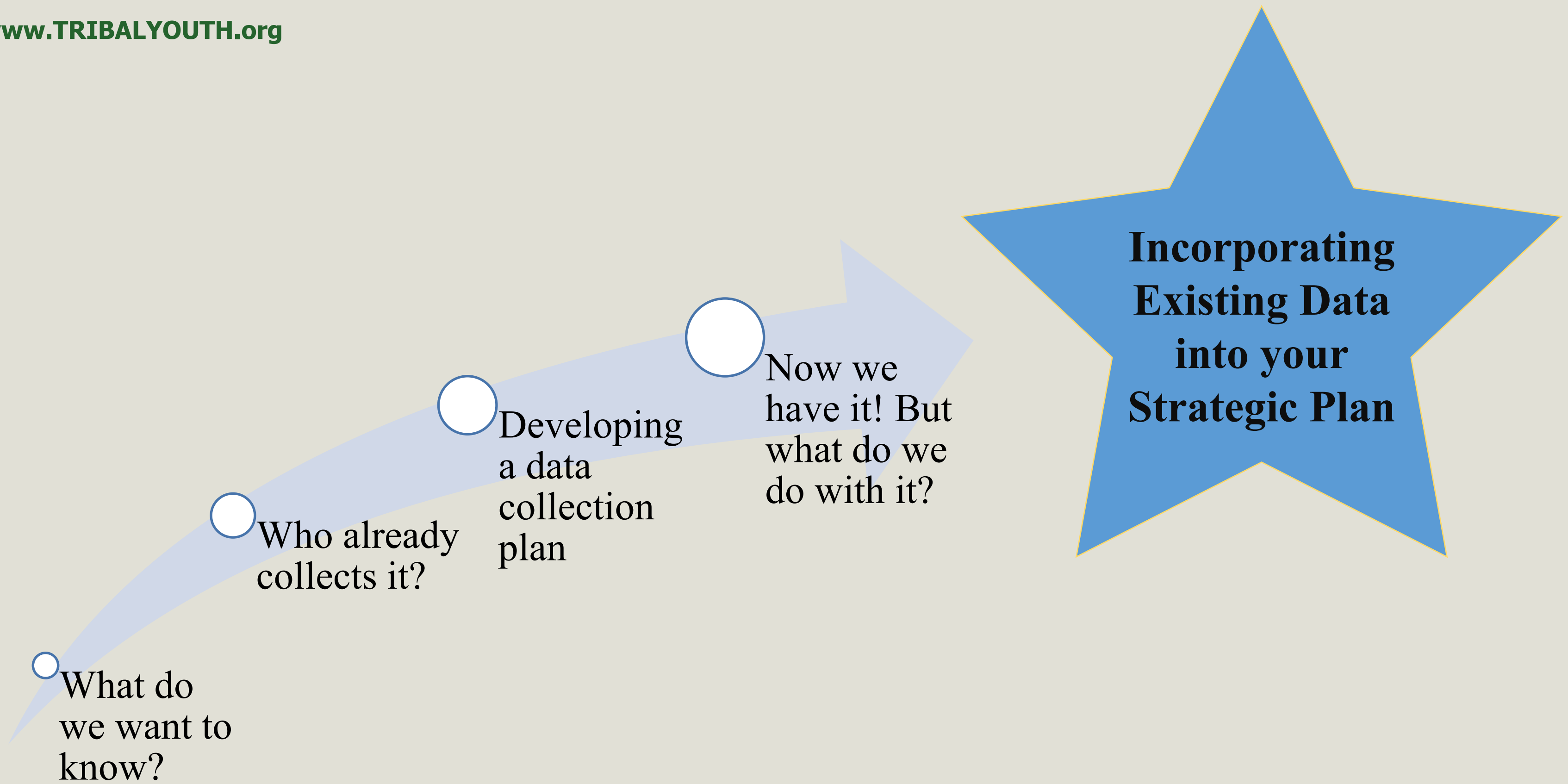


# Before/Current Story

## Local-Level Data







# One-on-One Interviews

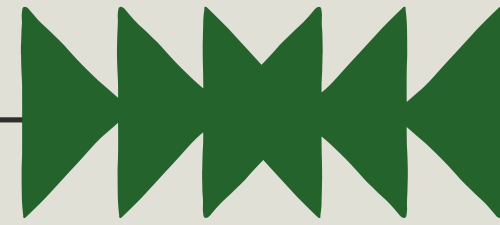
---

Understanding the interview as data

Who will we interview and why?

Crafting effective interview questions

Interviewing skills



# Community Survey

Identifying your population

Drafting an effective survey

Administering a survey

Data Analysis



[WWW.TRIBALYOUTH.ORG](http://WWW.TRIBALYOUTH.ORG)



# Focus Groups

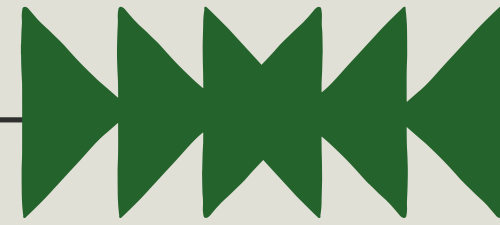
Tribal  
Leadership

Juvenile Justice  
staff

Youth

Parents &  
Caregivers

Social  
services and  
behavioral  
health  
staff



# The Practicalities of Focus Groups

- ✓ Choosing appropriate groups
- ✓ Crafting effective questions
- ✓ Facilitation techniques
- ✓ Translating into data
- ✓ Confidentiality and consent issues



[WWW.TRIBALYOUTH.ORG](http://WWW.TRIBALYOUTH.ORG)

# Community Forums



- Location, location, location
- Identifying opportunities
- Drafting questions
- Facilitating & recording
- Analysis

# Now What?

- How do you turn rough data into **key findings** to support the identified goals?
- Excel spreadsheets are your friend.
- Organize into **THEMES** or reoccurring issues:
  - Themes will be the issues that your **GOALS** will address.
- Capitalize on key resources and services identified in resource mapping to help develop objectives and activities.

# Data Collection Plan

Local-Level Data	Data to Collect	How will Data be Collected?	Timing Year/Quarter	Progress/Notes
<p>Cultural Connectedness of Youth aged 12-18.</p>	<p>Cultural Connectedness Scale Items</p>	<p>Traditional Teachings Equine-Assisted Learning Program Pre/Post test with court appointed youth aged 12-18.</p>	<p>Annual</p>	<p>Assessment tool has been shared and discussed with Community Advisory Committee. (cultural appropriateness)</p> <p>Data security plan training completed. (How do we keep data confidential and safe? Who is responsible?)</p>
		<p>Youth GONA Pre/Post Test with youth aged 12-18.</p>	<p>Annual</p>	
<p>Percentage of Youth who engage in program who reside with someone other than a biological parent.</p>	<p>Demographic Information/ Parent Caregiver Engagement/ Custodial Information</p>	<p>Consent to participate will include questions regarding demographic information</p>	<p>Ongoing/ Continuous</p>	<p>Consent to Participate includes appropriate questions: Example: Are you the biological parent the youth participant? (Yes/No) Are you an appointed custodian of the participant? (Yes/No)</p>

# Performance Measures

---

Performance measurement is a system of tracking progress of chosen activities in accomplishing specific goals, objectives, and outcomes:

- Is directly related to program goals and objectives
- Measures progress of the activities quantitatively
- Is not exhaustive
- Provides a temperature reading—gives quick and reliable gauge of selected results

# Data Management Goals

Enhance youth services

Make better-informed decisions

Promote collaboration

Support program growth and sustainability

Generate support for the program

# Any Questions?



# Reflections

