

Office of Juvenile Justice & Delinquency Prevention

Tribal Youth Resource Center (TYRC)

FY 2019 Cohort Strategic Planning

Engaging Indigenous Youth and Their Families Through Culture-Based Approaches



Definitions of Youth & Family Engagement



Child Welfare:

Family engagement is a family-centered, strength-based approach to establishing and maintaining relationships with families and accomplishing change together. <http://muskie.usm.maine.edu/helpkids/practicemodel/PMguide.pdf>

Juvenile Justice:

Family engagement: any role or activity that enables families to have direct and meaningful input into and influence on systems, policies, programs, or practices affecting services for children and families. http://www.ojjdp.gov/newsletter/238636/sf_3.html

Education:

Family engagement in schools is defined as parents and school personnel working together at the classroom, local, and system level to support and improve the learning, development, and health of children and adolescents. Family engagement in schools is a shared responsibility in which schools and other community agencies and organizations are committed to reaching out to engage parents in meaningful ways. https://www.cdc.gov/healthyyouth/protective/parent_engagement.htm

The “Why” of Youth & Family Engagement



- Increases safety, fairness, and stability for youth and families;
- Promotes youth and family participation and buy-in;
- Increases families' capacity to promote youth well-being;
- Expands planning options;
- Promotes positive relationships between the services, programs and other groups within the community;
- Family engagement is essential in promoting healthy physical, cognitive and social-emotional development and academic achievement of children and youth from pre-K to high school;
- Research shows that when families are meaningfully and continuously engaged in their children’s learning and development, they can positively impact their children’s health, development, academic, and well-being outcomes into adulthood.

www.youth.gov/youth-topics/family-engagement

Youth & Family Engagement



Sharing Examples of Youth & Family Engagement



Considerations for Defining Culture-Based Approaches



Indigenous Ways of Knowing as Foundation

- Mind, Spirit, Body, Emotion – focus on holistic
- Place-based, e.g. land, water
- Use of respective Tribal/Indigenous Language
- Inclusive of kinship and extended family network
- Access to Cultural practices
- Seeing/relating to youth as relatives, not “clients” or “students”

Considerations for Defining Culture-Based Approaches



Incorporation of traditional lifeways and healing interventions:

- Example 1: Spirit purification ceremony from exposure to trauma or experiences of trauma
- Example 2: Service learning projects incorporated into case plan, e.g., working with Elders or traditional leaders on a community project
- Example 3: Indigenous Model of Restorative Practices, e.g., Talking Circles for case management and peer groups & Family Group Decision Making Conferencing

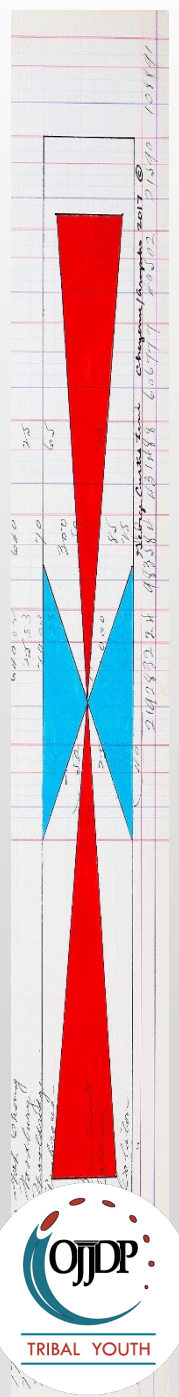
Examples of Culture-Based Programs

- ***National Indian Youth Leadership Project (NIYLP):*** Project Venture is the only science-based Native American adventure training curriculum.
www.projectventure.org
- ***Gathering Of Native Americans (GONA)*** – focus on Prevention, intervention, youth leadership, and family relationships
- ***American Indian Life Skills (AILS)*** – strengthening life skills and reducing suicidal thoughts and behavior among American Indian youth

Examples of Culture-Based Programs cont.'

- **Family Spirit** – evidence-based home visiting designed to address intergenerational behavioral health, <http://caih.jhu.edu/programs/family-spirit>
- **Brave Heart Society** – for Nakota, Dakota and Lakota Sioux women and girls, program designed to revive their cultural traditions
- **Healing of the Canoe** – Culturally Grounded Life Skills for Youth (Healing of the Canoe) is a curriculum for Native youth focused on suicide and substance abuse prevention, www.healthynativeyouth.org/curricula/healing-of-the-canoe/
- **Euchee (Yuchi) Language Project** – Sapulpa, OK, <http://www.yuchilanguage.org/>
- **White Bison** – Sons and Daughters of Tradition, prevention education program for youth (ages 8-17) to create healthy identities <http://whitebison.org/>

Bring Youth Voice to the Front

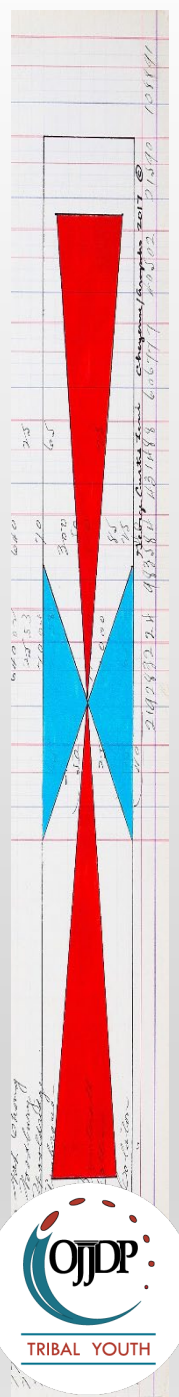
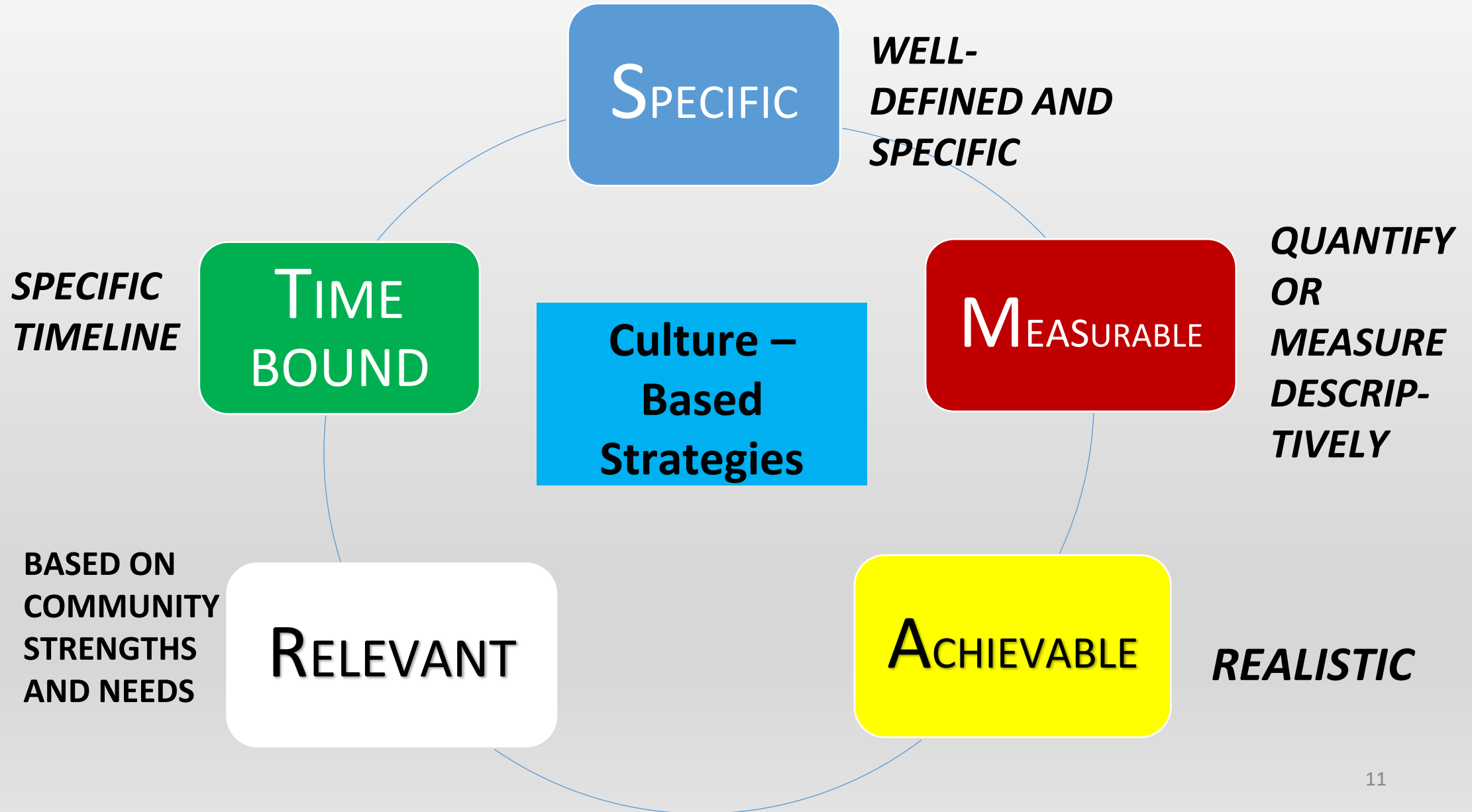


Considerations for Youth Engagement Approaches with Youth

- Gender Equality
- LGBTQ inclusion
- Peer Youth Mentors
- Focus on Healthy Relationships
- Cultural Relevance
- Peace Building Skills



Use SMART Planning



What are Some Culture-Based Strategies for the Youth you will be working with?

