

Tribal Youth Program Strategic Planning Learning Lab

*Pathway to Resilience,
Healing, and
Cultural Restoration*



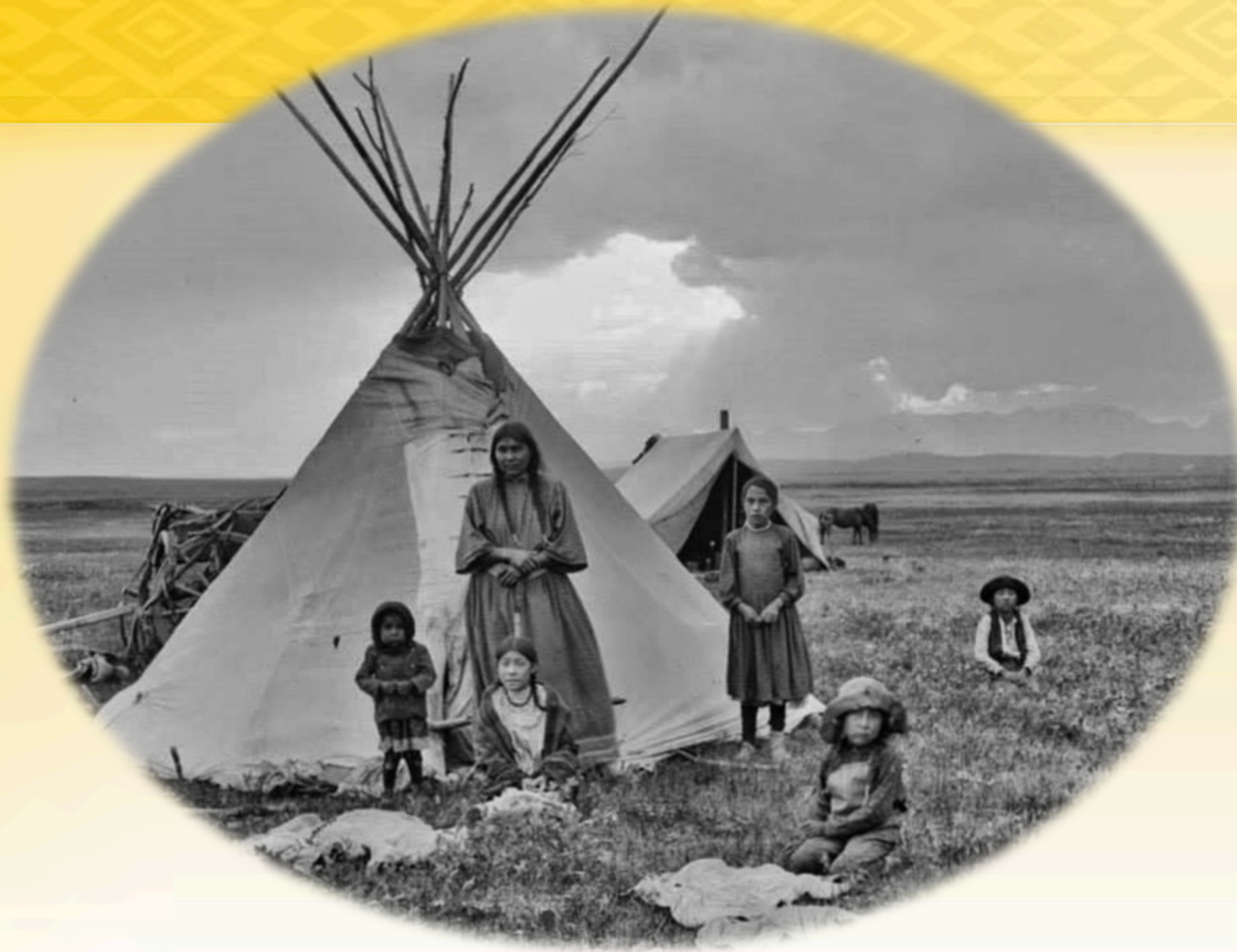
Session #4: Logic Model

Thursday, 5/27/21
11 am PT/12 pm MT/
1 pm CT/2 pm ET
90 minutes

Facilitators:
Ethleen Iron Cloud-Two Dogs and
Leon Leader Charge

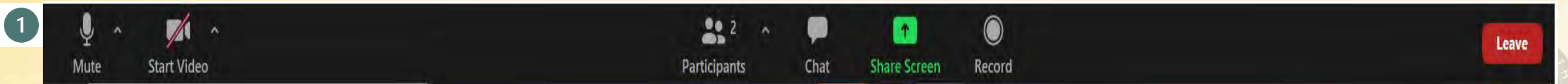
This project was supported by Grant #2018-MU-MU-K001 awarded by the Office of Juvenile Justice and Delinquency Prevention, Office of Justice Programs, U.S. Department of Justice. The opinions, findings, and conclusions or recommendations expressed in this publication/program/exhibition are those of the author(s) and do not necessarily reflect those of the Department of Justice.

Opening in a Good Way

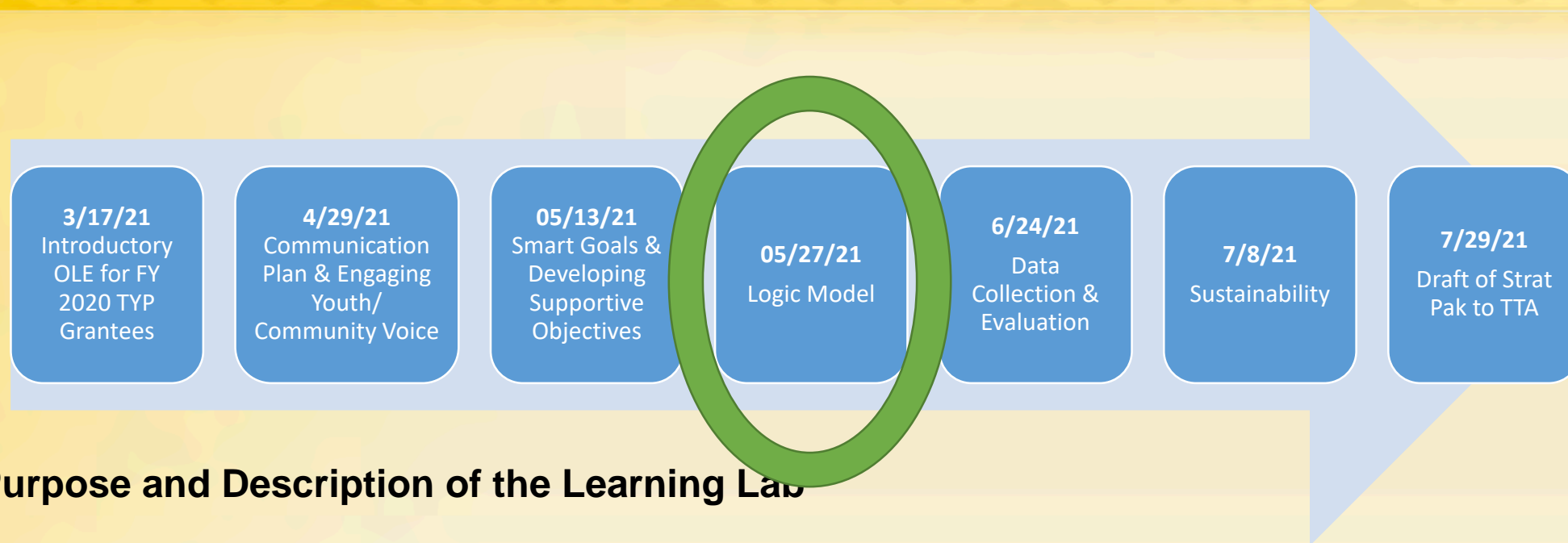


Tech Reminders

- 1 Your control panel will appear at the bottom of your user screen. (As shown below)
- 2 All participants should remain muted when not speaking.
- 3 Use the Chat box to submit a comment or question.



Learning Lab – Logic Model

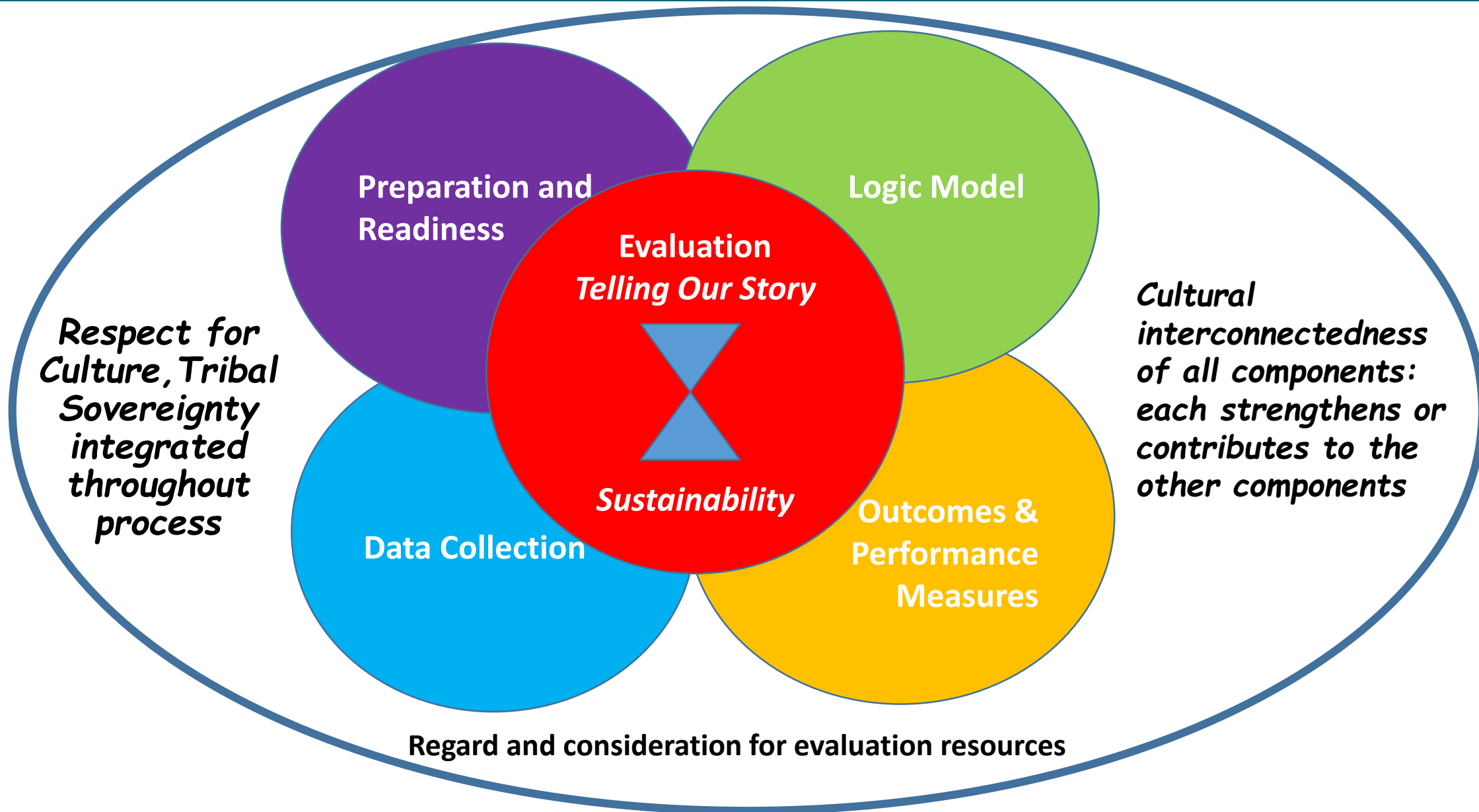


Purpose and Description of the Learning Lab

- The Workshop/Learning Lab approach will offer a hands-on approach to a different area of the Strat Pak tool every few weeks.
- These sessions will be interactive, encouraging brainstorming, discussion and problem-solving in real time.



How Logic Model Fits with Overall Strategic Planning and Evaluation

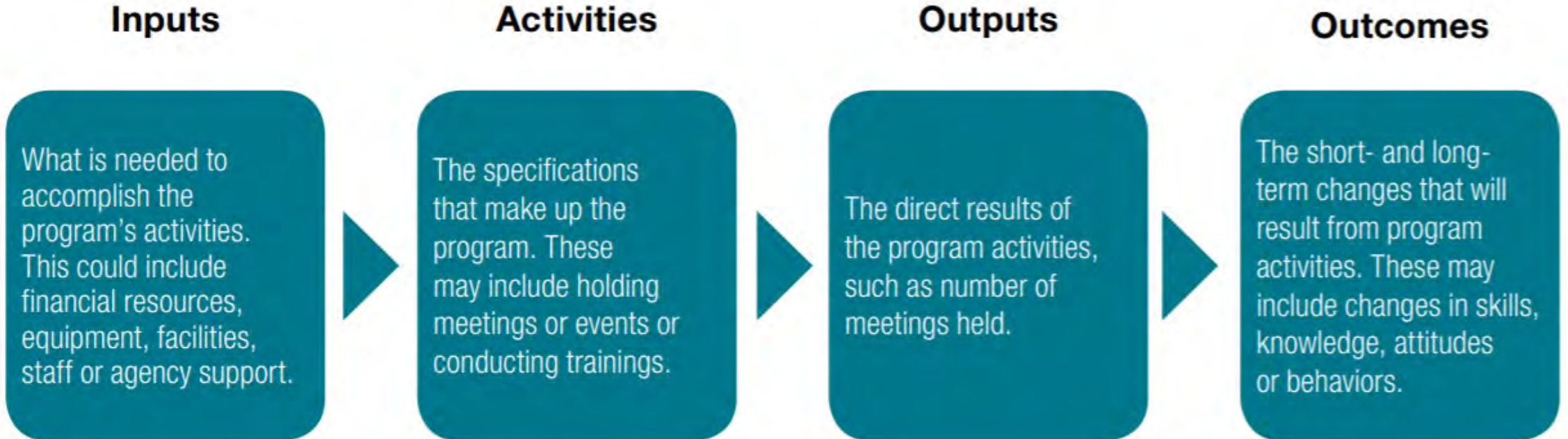


Logic Model: Understanding Our Program

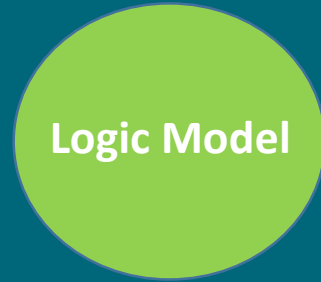
- Where are we going and how are we going to get there?
 - What are our goals? What changes do we want to see in our youth? In our communities?
 - What will these changes look like when we succeed? How will we know it happened?
 - What are we doing to create these changes?
 - What is the connection between our program activities and the outcomes we want to see?
- Logic Models are a useful tool to visualize our program's goals and activities
- Our Logic Model reflects our goals and objectives

Elements of a Logic Model

Figure 1. Sample Logic Model

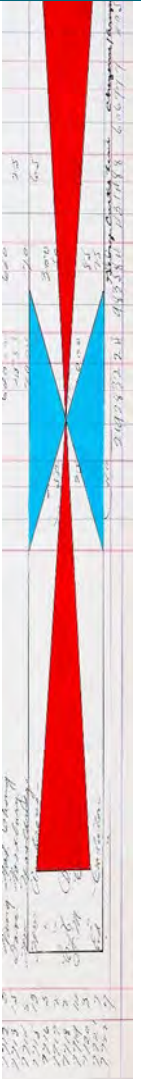
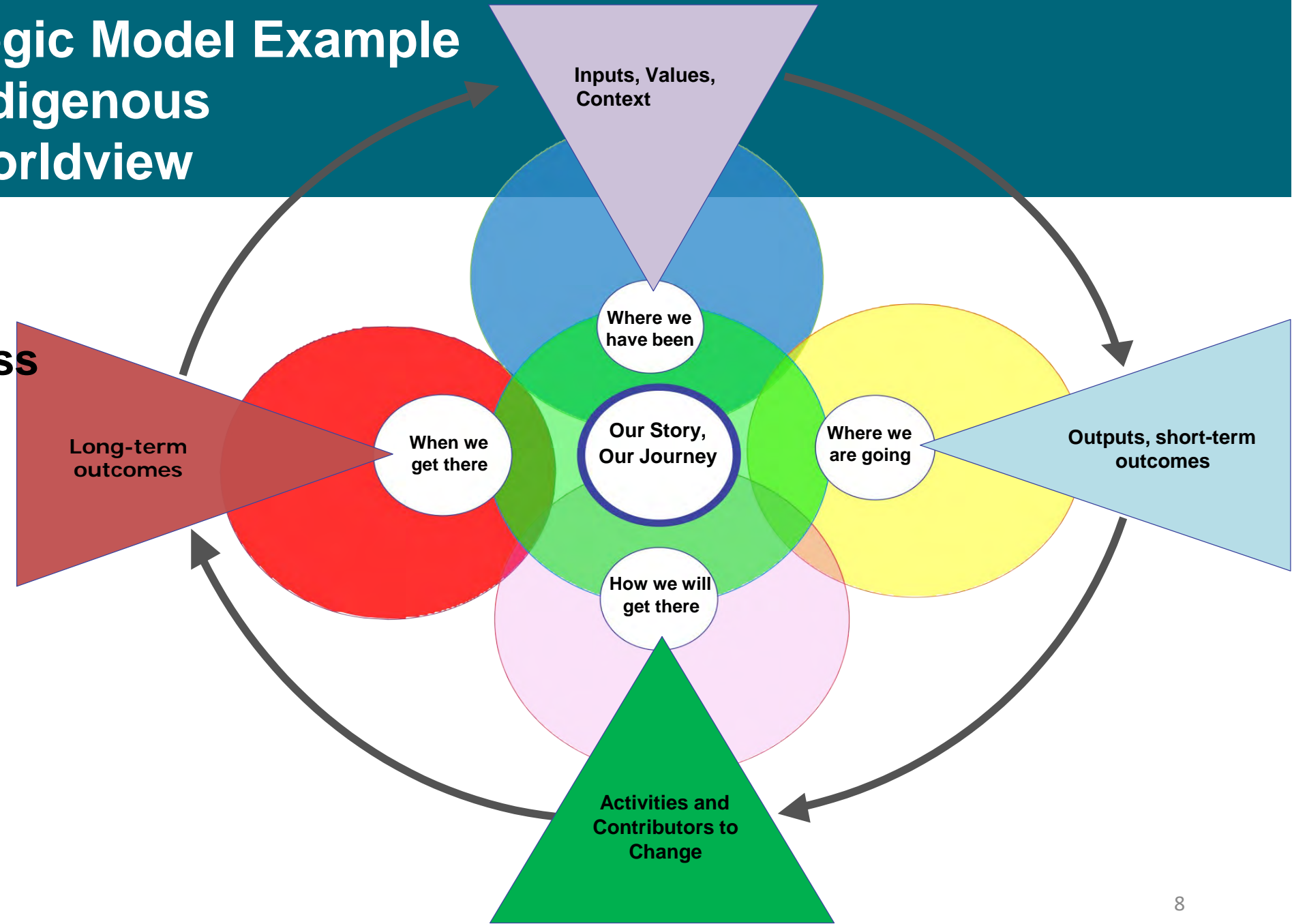


Source: Martin, Alison Brooks, "Plan for Program Evaluation From the Start," NIJ Journal 275 (2015): 24-28, available at <http://nij.gov/journals/275/Pages/plan-for-program-evaluation.aspx>.



Logic Model Example Indigenous Worldview

Enhancing Native/Tribal Youth Wellness and Cultural Identity



Logic Model Example:

American Indian Higher Education Consortium

One illustration of the Story of Summer Employment Program

Summer Employment Students Graduate and Seek Higher Education



Breakout Session

Overview of Workgroup Guidance

- **Choose a facilitator or co-facilitators for your group (who also serve as timekeepers)**
- **Choose a spokesperson to share your discussion with the large group**
- **Take about 13 minutes to discuss the bulleted question in Item 1**
- **Take about 13 minutes to discuss the bulleted questions in Item 2**
- **Take about 9 minutes to discuss and come to consensus on Item 3**



Questions for Breakout Groups

1. **Some questions to inform the development of a logic model**

- Where have we been?
- Where are we going?
- How will we get there?
- How will know when we have arrived where we are going? Think evaluation

2. **Some critical questions to guide our work**

- What is the foundation for our work?
- Think of an example of traditional teachings that can be transformed into strategies?
- How can we be healing informed rather than trauma informed?
- How can we work from a perspective of being resilient rather than from a place of deficit?

3. **What are some first steps we need to take to develop a logic model?**



Breakout Session – 35 minutes



Large Group Report out and Discussion

- Designated spokesperson(s) include an overview from the three discussion items
- Include any training or technical assistance needs identified during discussion



Questions?

- **Any questions about this session?**
- **How is the strategic planning process going?**
- **What further supports can the training and technical assistance team provide?**



Next Session

Thursday, 6/24/21

10 am AK/11 am PT/12 noon MT/1 pm CT/2 pm ET

90 Minutes

Data Collection & Evaluation

In the meantime:

*Work with your Technical
Assistance Specialist to
complete your logic model*



Closing in a Good Way

