



Increasing Family Involvement in the Juvenile Healing to Wellness Court

April 20, 2023



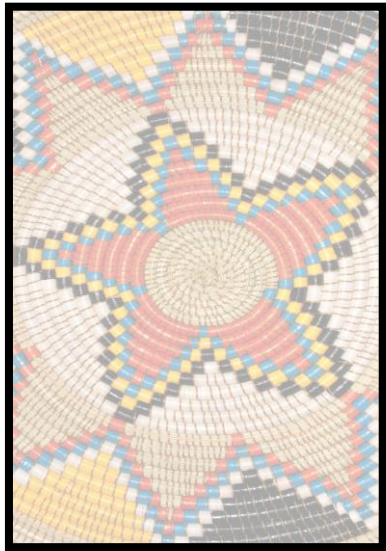
Tribal Youth Resource Center
www.TribalYouth.org

Opening



Tribal Youth Resource Center
www.TribalYouth.org

WELLNESS COURT TRAINING AND TECHNICAL ASSISTANCE PRESENTERS



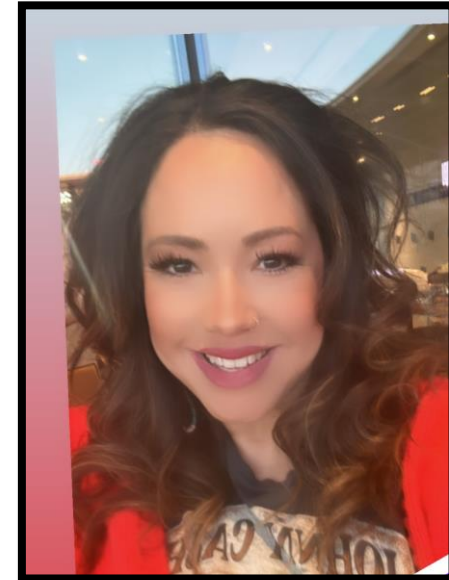
Nan Benally
JHWC TTA Specialist



Teresa Nord
TYP Training and Technical Assistance Specialist



Chaniel "Chanty" Grant
TYRC Consultant



Erin Thin Elk
JHWC Consultant

Disclaimer

This project was supported by Grant #15PJDP-21-GK-04048-MUMU awarded by the Office of Juvenile Justice and Delinquency Prevention, Office of Justice Programs, U.S. Department of Justice.

The opinions, findings, and conclusions or recommendations expressed in this publication/program/exhibition are those of the author(s) and do not necessarily reflect those of the Department of Justice.



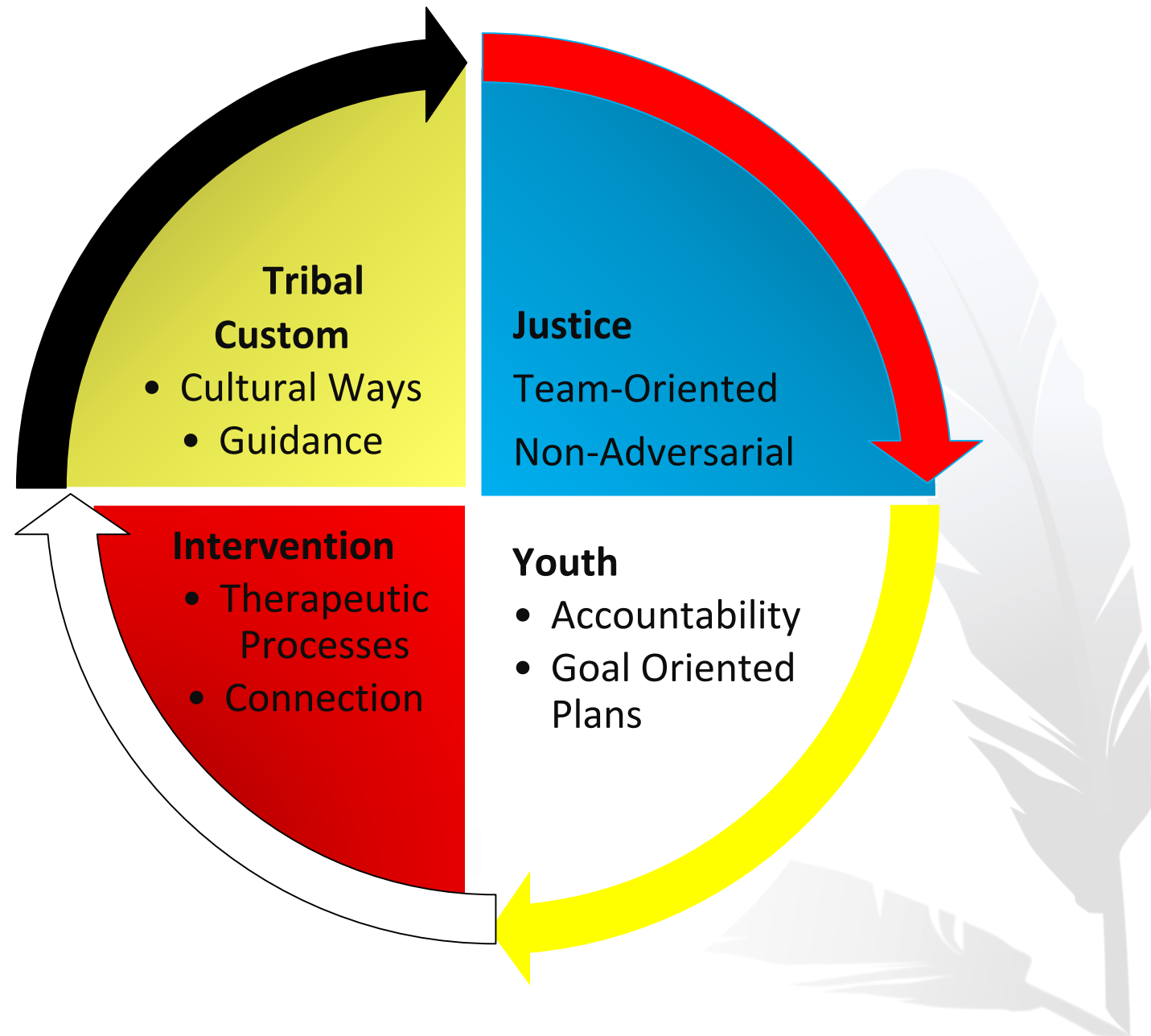


▶ Our Time Together Today

- ❖ Brief Overview of Juvenile Healing to Wellness Courts
- ❖ Group Activity: How do you define family?
- ❖ Traditional Indigenous Family Roles and Engagement
- ❖ Juvenile Healing to Wellness Court Family Inclusion and Communication
- ❖ Selected Resources
- ❖ Questions and Closing

Healing to Wellness Courts

- ❖ Enhance capacity.
- ❖ Provide services that are:
 - ❖ Comprehensive
 - ❖ Developmentally appropriate
 - ❖ Community-based
 - ❖ Culturally-appropriate



Juvenile Healing to Wellness Court

❖ Team-based Case Management

- ❖ Judge/Court Leader
- ❖ Coordinator/Case Manager
- ❖ Legal Counsel
- ❖ Supervision
- ❖ Treatment Representative

❖ Juvenile Considerations:

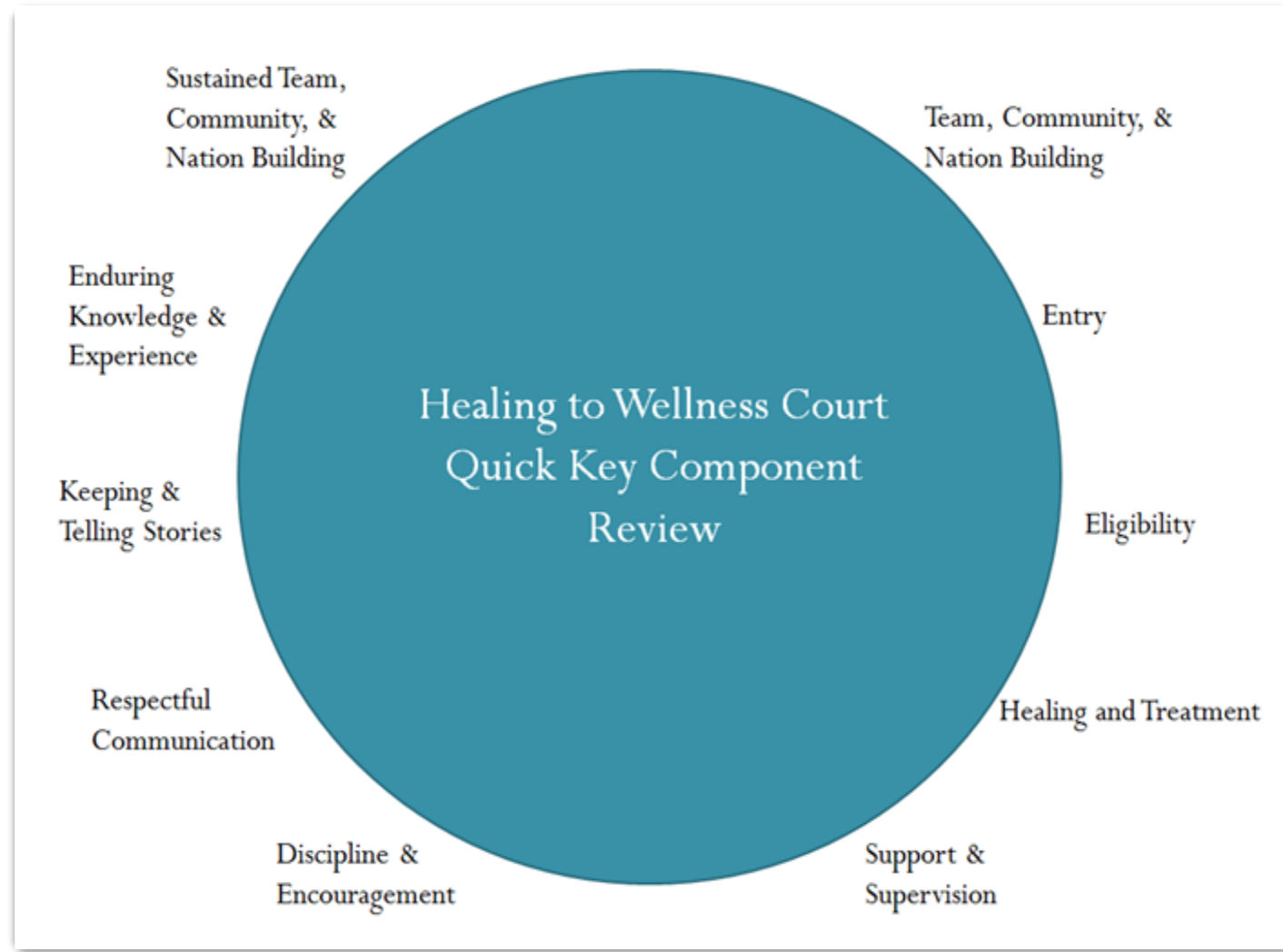
- ❖ Family/Social Services
- ❖ Education
- ❖ Elders/Culture
- ❖ Community Members



► Ten Key Components

Cultural Connections

What makes the JHWC different than a conventional treatment court?



► Culture as a Key Component

- ❖ Indigenous cultures focus on holistic wellness, which most often involves family and the community in the healing process.
- ❖ Family and caregiver engagement is critical to the success of the JHWC process.
- ❖ But let's pause for a moment....who or what is family?



▶ Traditional Indigenous/Tribal Family Engagement

- ❖ Family engagement is natural within Tribal communities through culturally motivated events, customs, or practices.¹
- ❖ Traditionally, families have been essential to the survival, well-being, and livelihood of tribal communities and have served many roles in the community such as:²
 - ❖ Decision-makers
 - ❖ Protectors
 - ❖ Teachers
 - ❖ Hunters
 - ❖ Gatherers
 - ❖ Keepers of customary practices
 - ❖ Caregivers of elders and children

1. National Indian Child Welfare Association, "[Traditional Family Engagement](#)," Tribal Best Practices A Toolkit with Best Practices, Research, and Resources.

2. Ibid.

JHWC Family Inclusion and Communication

- ❖ Inclusion of not only the biological, but extended family and recognized community members.¹
- ❖ Tribal communities often have:
 - ❖ Stronger extended family networks/prevalent extended family.
 - ❖ Intergenerational living arrangements.
 - ❖ Aunts, uncles, cousins and siblings have all been shown to influence Tribal youth substance abuse or abstinence from substance abuse.²

1. McKay et al., "[Parent and Family Involvement with Youth in the Tribal Juvenile Justice System: Perspectives from OJJDP's Tribal Green Reentry Initiative](#)," RTI International, 2014

2. Ibid.

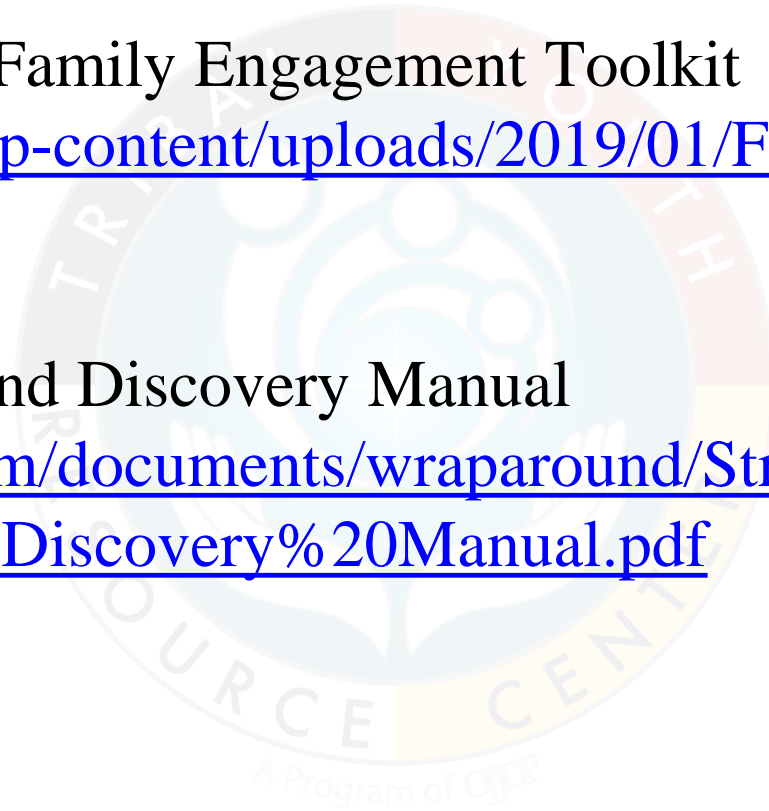
▶ JHWC Family Inclusion and Communication

- ❖ Orientation that includes parents and/or guardians.
- ❖ Inclusion in case planning/management.
- ❖ Better outcomes when resources are identified and matched based on individual need.
- ❖ Opportunities to engage with JHWC Team and share about challenges and successes throughout the case process.
- ❖ Incentives that include the whole family.
 - ❖ (Gift cards, movie nights, praise/acknowledgment).



SELECTED RESOURCES

- ❖ Tribal Best Practices for Family Engagement Toolkit
<https://www.nicwa.org/wp-content/uploads/2019/01/Fam-Engagement-Toolkit-2018.pdf>
- ❖ Strength Needs Culture and Discovery Manual
<http://www.socflorida.com/documents/wraparound/Strengths,%20Needs,%20and%20Cultural%20Discovery%20Manual.pdf>



▶ TAKE AWAYS

- ❖ What steps are needed to support youth as they develop connections within the local community?
- ❖ What steps will the team take to support whole family involvement and coordinated communication with parents and caregivers?
- ❖ What resources are needed to implement either of these components within the JHWC?

DISCUSSION/QUESTIONS



Closing



Tribal Youth Resource Center
www.TribalYouth.org



Reach Out

Tribal Youth Resource Center

www.TribalYouth.org

8235 Santa Monica Blvd., Suite 211
West Hollywood, CA 90046
(323)650-5467 ~ fax: (323)650-8149

